



THE WHALER



July 2022



The Suzuki 1999 GSX1300R Hayabusa

It immediately won acclaim as the world's fastest production motorcycle, with a top speed of 303 to 312 km/h (188 to 194 mph).

In 1999, fears of a European regulatory backlash or import ban led to an informal agreement between the Japanese and European manufacturers to govern the top speed of their motorcycles at an arbitrary limit. The media-reported value for the speed agreement in miles per hour was consistently 186 mph, while in kilometres per hour it varied from 299 to 303 km/h, which is typical given unit conversion rounding errors.

The conditions under which this limitation was adopted led to the 1999 Hayabusa's title remaining, at least technically, unassailable, since no subsequent model could go faster without being tampered with. After the much anticipated Kawasaki Ninja ZX-12R of 2000 fell 6 km/h (4 mph) short of claiming the title, the Hayabusa secured its place as the fastest standard production bike of the 20th century.

This gives the unrestricted 1999 models even more cachet with collectors.

What's in this Month's Whaler?

President Chat 3

Member Information - Your Committee 2022 4

Branch Rides 5

Get a Grip on Tyres11

News & Future Events12

2022 Ulysses Club 28th Odyssey- Mannum13

Welfare Matters14

Age, Service Badges & Branch Shirts14

RV Weekenders14

For those who don't Know Everything Yet15

The Funny Side.....16

Fleurieu Wines19

Branch Classified ads.....19

ULYSSES CLUB INC. - FLEURIEU BRANCH JULY WHALER

President Chat

It has been an uneventful month so far, some of our members are down with Covid, the worst being Phil Salter having a nasty dose of long Covid. Get well soon son, we miss you. Monthly social meetings have been down in numbers lately, due mainly to how cold and miserable it is in the evenings. Remember it is warm in The Alma and the company is great. Also, you are missing out on Mikey's jokes. Thanks all the regulars.

Judging on some figures that NATCOM have released, it appears that the membership of Ulysses Club is on the decline. Mikey has the numbers, they are not pretty. Only 900 attended the last Rally in Warwick, why? I could venture a guess, too far, too expensive, and too long. What do you our members think? What can we do to increase membership? Do we need to totally rebrand Ulysses to bring it into the 21st century? Is the old man logo no longer relevant in 2022, I know most of the females I talk to hate it.

Anyway, enough of that. The weather is slowly improving, temps are increasing a bit and we are down to one car, The Civic is gone, so I will be riding for need as much as pleasure. Ahh, the old days when all I had was a bike, be it a Honda 750, Suzi 1100 Katana, Kwaka 900 etc. I think I will enjoy this new experience.

A couple of things about Sunday rides, the ride brief is being held a bit late causing us to depart late. So, in the future, ride briefing will start at about 10 to the hour. Secondly, because of the confusion at the last ride after smoko, it has been decided that we will gather for another ride brief. Also, I would like to see that the smoko break is a bit longer so we can relax a bit. 45 minutes maybe? And push the lunch back to 1 o'clock ish. Jude tells me that she had a bit of trouble in Hahndorf with the corner marshal. The bike had those really small indicators which are almost impossible to tell if they are on or not. If you have one of those bikes, please indicate with your arm the direction of the turn.

I think I am pretty well done now, can't think of anything else to ramble on about. Look forward to catching up at the social meeting on Thursday and Poida's ride on Sunday.

Cheers All, Brett.

ULYSSES CLUB INC. - FLEURIEU BRANCH JULY WHALER

Member Information - Your Committee 2022

President

Brett Wise

0422 399 503

brett_wise@internode.on.net

#65152



Welfare Officer

Cherie Thorpe

0498 711 137

reumes.thorpe@gmail.com

#66385



Secretary/ Whaler Editor

Mike Thorpe

0405 174 741

mike.thorpe@bigpond.com

#63939



New Members

Marie Wilson

0413 795 833

marie.selby@optusnet.com.au

#64175



Treasurer/Quartermaster

Peter Swallow

0411 364 940

personimo@gmail.com

#69011



Ride Coordinator

Philip Wilson

0405 226 284

marie.selby@optusnet.com.au

#53322



Web Master

Vicki Ryan

0410 586 219

vicryan@yahoo.com

#30737



Committee Member

Philip Salter

0419 206 602

salter@internode.on.net

#33675



Fleurieu Branch - Email:

fleurieubrand@gmail.com

Fleurieu Branch - Website:

<https://fleurieu.ulyssesau.org/>

Fleurieu Branch - Facebook:

<https://www.facebook.com/ulyssesfleurieu/>

Branch Welfare Officer:

fleurieubrand.welfare@gmail.com

Ulysses Club National Website:

<https://www.ulysses.org.au/>

SA Calendar Of Events:

<http://ulyssesadelaide.com.au/sacalendar/>

Whaler Editor:

mike.thorpe@bigpond.com

ULYSSES CLUB INC. - FLEURIEU BRANCH JULY WHALER

Branch Rides

Sunday Rides

- Every Fortnight, refer Ride Calendar following.
- Departing from the Alma Hotel Willunga.
- **Theses rides depart Top of Taps.**
- **These rides are events.**

Ride Leaders Calendar

July

10th Brett

24th Peter Swallow

October

2nd Scott Robinson
(Long weekend)

16th Ian Kennedy

**21st – 24th Odyssey
Mannum.**

30th Jack Ash

August

7th John Green

21st Philip Salter

November

6th Lions Bike Show

13th Trevor Staples

**20th Onkaparinga
Pageant**

27th Brenton Jones

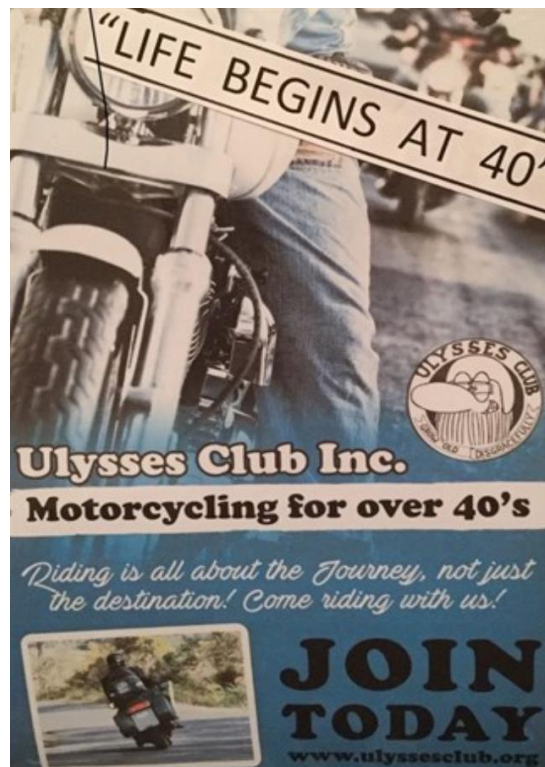
September

4th Dave
Polkinghorne

18th Marie & Philip
Wilson

December

**11th Toy Run or ride
???**



ULYSSES CLUB INC. - FLEURIEU BRANCH JULY WHALER

- Public Holidays
- Branch Sunday Rides
- Committee Meetings
- Social Meetings
- Gary Parker Friday Rides
- Dominic Carli Wednesday Rides
- 3Cs Coffee

2022

Fleurieu Branch Ride Calendar

January						
M	Tu	W	Th	F	Sa	Su
					1	2
3	4	5	6	7	8	9
10	11	12	13	14	15	16
17	18	19	20	21	22	23
24	25	26	27	28	29	30
31						

February						
M	Tu	W	Th	F	Sa	Su
	1	2	3	4	5	6
7	8	9	10	11	12	13
14	15	16	17	18	19	20
21	22	23	24	25	26	27
28						

March						
M	Tu	W	Th	F	Sa	Su
	1	2	3	4	5	6
7	8	9	10	11	12	13
14	15	16	17	18	19	20
21	22	23	24	25	26	27
28	29	30	31			

April						
M	Tu	W	Th	F	Sa	Su
				1	2	3
4	5	6	7	8	9	10
11	12	13	14	15	16	17
18	19	20	21	22	23	24
25	26	27	28	29	30	

May						
M	Tu	W	Th	F	Sa	Su
						1
2	3	4	5	6	7	8
9	10	11	12	13	14	15
16	17	18	19	20	21	22
23	24	25	26	27	28	29
30	31					

June						
M	Tu	W	Th	F	Sa	Su
		1	2	3	4	5
6	7	8	9	10	11	12
13	14	15	16	17	18	19
20	21	22	23	24	25	26
27	28	29	30			

July						
M	Tu	W	Th	F	Sa	Su
				1	2	3
4	5	6	7	8	9	10
11	12	13	14	15	16	17
18	19	20	21	22	23	24
25	26	27	28	29	30	31

August						
M	Tu	W	Th	F	Sa	Su
1	2	3	4	5	6	7
8	9	10	11	12	13	14
15	16	17	18	19	20	21
22	23	24	25	26	27	28
29	30	31				

September						
M	Tu	W	Th	F	Sa	Su
			1	2	3	4
5	6	7	8	9	10	11
12	13	14	15	16	17	18
19	20	21	22	23	24	25
26	27	28	29	30		

October						
M	Tu	W	Th	F	Sa	Su
					1	2
3	4	5	6	7	8	9
10	11	12	13	14	15	16
17	18	19	20	21	22	23
24	25	26	27	28	29	30
31						

November						
M	Tu	W	Th	F	Sa	Su
	1	2	3	4	5	6
7	8	9	10	11	12	13
14	15	16	17	18	19	20
21	22	23	24	25	26	27
28	29	30				

December						
M	Tu	W	Th	F	Sa	Su
			1	2	3	4
5	6	7	8	9	10	11
12	13	14	15	16	17	18
19	20	21	22	23	24	25
26	27	28	29	30	31	

Sunday rides every second Sunday. Refer to Ride Calendar above for dates.
 Meet at the Alma Hotel well before at 10:00 am. Stands Up at 10:00 am Sharp

ULYSSES CLUB INC. - FLEURIEU BRANCH JULY WHALER

There are Wednesday and a Friday Rides between the Sunday rides.
Refer to Ride Calendar above for dates.



Dominic Carli leads Wednesday Rides.

Meet at Victor at 9.30 am.
Meet at the Alma Hotel
Well before at 10:00 am
Stands Up at 10:00 am Sharp
Next ride August 10th
For details please contact
Dom on 0433 052 053



Gary Parker leads Friday Rides.

Meet at the Alma well before at 10:00 am
Stands Up at 10:00 am Sharp
Next rides
July 29th
August 26th
For details please contact
Gary on 0410 803 633

Friday Rides Photos



ULYSSES CLUB INC. - FLEURIEU BRANCH JULY WHALER



The Two Ferries Ride Leaders



ULYSSES CLUB INC. - FLEURIEU BRANCH JULY WHALER

Two Ferries Ride

The weather report indicated 90% chance of rain in the morning and early afternoon. Having already cancelled the 2 Ferries Ride once because of supposed rain, this time we went ahead. We gathered at the Alma for the toolbox talk and ride brief given by our resident Fairy Leader Phil and Marie. It was good to see Rainman, Garry and Lurch back riding along with new rider Alan on a Harley Davidson. The 17 bikes headed off with Phil (Stick it UYA) leading and Marie (Las) doing her best game show hostess impersonation of indicating the Corner Marshall locations. With Poida in the tail we travelled through McLaren Flat and Meadows along Paris Creek Road and into Strathalbyn. Very small amount of drizzle as we approached Strath. There were lambs on the side of the road some looking happy with tails whilst others looked like they had lost their best friend. Coffee at Strath was good as always and then off on the longer part of the ride, to Wellington and over the Ferry, around to Taillem Bend and over the Jervis Ferry and into Murray Bridge for lunch at McCues Bakery. Slight drizzle on the way into the Bridge, off the bikes and then it "well chucked it down" for 10 minutes. By the time we had finished eating the rain was gone and off we went home. Marie saw her usual paddocks full of Cows, Chickens and Sheep. Wanting to stop and talk to them all. A lovely day and great ride. Thanks for all those who were involved.

Phil and the Beautiful Marie.



ULYSSES CLUB INC. - FLEURIEU BRANCH JULY WHALER

Corkscrew Ride Report

It's a cool sunny morning at the Victoria Hotel. 20 bikes have assembled including Scott's son in law Nigel on L plates. Poider tells me that the coffee from the pub is rubbish so, none for me. A safety briefing is given by Phil and it's time to mount up. Poider comes alongside indicating all are ready and off we go, through Coromandel Valley, the right turn onto East Terrace at Belair made easier by a train stopping oncoming traffic. Across the freeway at Aldgate, around Mt Lofty summit, continuing north to Montacute Road. The Corkscrew may not be the greatest switchback road in the world, it is ours and is fun to ride. Now we are on the sweeping bends of Gorge Road, if only this had a higher speed limit. It is 80 kph, so be it. Smoko break was at Cudlee Café, somewhere I had not been before, and it is a biker's stop judging by the numbers there. Nice coffee, also some produce and eclectic wares.

Unfortunately, there was some confusion on departure causing an incident. It appears that people are reticent about being second so when I departed no one else did causing the confusion. A new procedure will be implemented to stop this happening again.

We made our way back to McLaren Vale by way of Hahndorf and Meadows, nothing to report here. Lunch at The Tin Shed was most enjoyable with great company and good food.

Cheers, Brett.



Get a Grip on Tyres

The tyres are often the most neglected part of our motorcycle but they are the only thing that keeps us in contact with the road and depending on their condition will have a large effect on the handling, cornering and ride comfort. All of this is done with a very small footprint or contact area with the road (just a few square centimetres)

Here are some simple tips and basic information on your tyres that will make a difference to your safety, comfort and extend the life of your tyres which certainly not cheap and need looking after.

Tyre Pressure – Use the manufacturers recommended pressure for your tyres this can usually be found in the manufacturers handbook or on a sticker on the bike or you can look it up on their website. Always check the tyre pressure when they are cold, but If you have to check the tyre pressure when they are hot add 3-4 lb. Add 10% to tyre pressure in wet conditions for extra grip. Low tyre pressure will lead to imprecise cornering, overheating, side wall cracking, excessive wear on the outside on the tread and excessive fuel use. Check your valve cap "o" ring for wear and tear as this is your secondary valve seal.

Tyre Wear – Check the tyre wear indicator (this is a raised spot on the tread to let you know when the tyre has reached the legal tread depth limit of 1.5 mm. Wear will be greatly reduced by wheel alignment, faulty suspension, speed and load, your riding style, road condition and the tyre contact patch with the road (tyre pressure) Different tyre compounds will also make a difference (don't buy sports tyres if you are touring as sports tyres tend to use softer compounds for extra grip.

Age Of Tyres – tyres are a bit like people, they start their life flexible and improve for a while but eventually start to get less flexible, don't perform as well as they used to and develop a few cracks around the edges. So if you don't use your bike a lot get them checked after 5 years (manufacturer's recommendation) from the date of manufacture not from when you bought them. The manufacture date can be found on the side wall as a 4 digit number for the month and year e.g. 26-13 will be 26th week on 2013.

Side Wall Information – There is a heap of number on the side wall of your tyres some relates to the size of the tyre and some of the numbers and letters relate to speed and load rating. Example 130/90-16 67 H (metric version –MT 90-16 67 H) MT stands for motorcycle tyre, 130 is the overall width of tyres, 90 is the tyre height as a percentage of the width. 16 is the rim diameter (67) IS THE LOAD RATING in this case 307 kg per tyre (so on my ST 1300 I can legally and safely carry 614 kg that includes my bike, me, my pillion passenger, a full tank of fuel and any gear I load on to it including a trailer. So if you intend carrying a load of gear then get a tyre with a load rating to suit. Increasing the tyre pressure will not increase the tyres load carrying capacity. (H) IS THE SPEED RATING in this case it is 210 km/hr. this is fine for regular riding but if you are in the Northern Territory with open speed limits it is illegal to exceed your tyres speed rating.

NEW TYRES – When you get new tyres fitted to your bike run them in for the first 100-200 km (manufacturers recommendation) This just means taking it easy with the way you ride until you have get the feel of the new tyres and they have had a chance to roughen up across the entire tread surface for effective grip. Always get a new tyre balanced and check and recheck the tyre pressure every couple of hundred kilometres. Mixing the tyres is not illegal as some people thing, as long as the size is not changed from the original e.g. Dunlop front - Michelin rear. It is illegal to fit car tyres to motorcycles with the exception of trikes and motorcycles fitted with a sidecar but the tyre must be fitted to a modified car rim and pass inspection. (Source – Department of Transport)

Puncture Repairs - we are always in danger of getting a puncture when we are out on a ride, I would suggest that you carry a puncture repair kit with you and know how to use it. Foam sealants work ok on some punctures but be aware they are toxic and you must let the tyre repair guy know that you have used it so that he can take precautions. Only 70% of the tyre area of motorcycle tyres is deemed to be repairable, the last 15% on each side of the tyre is classed as the tyre wall and cannot be repaired, but if you are at the back of Burke then you options may be restricted. In any case after a roadside repair it is strongly recommended

ULYSSES CLUB INC. - FLEURIEU BRANCH JULY WHALER

that you get the tyre removed from the rim and inspected by a tyre professional to look for unseen damage to the inside of your tyre. Also check for wheel damage after a puncture or a heavy impact such as a pot hole.

Don't forget to check your tyre pressure regularly – this is the most important thing you can do for your safety, comfort and bank balance.

Load Index in kg- 64=280, 65=290, 66=300, 67=307, 68=315, 69=325, 70=335, 71=345

Speed index in km- Q=160, R=170, S=180, T=190, U= 200, H=210, V=240, W=270, Y=300

Dave Wright #51971

Road Safety Committee

News & Future Events

Guy MALPASS #10680 Contribution

I left on a Wednesday heading to the Warwick National Rally. I was joined by 5 members from the lower Murray branch on Thursday.

The trip up was a combination of coffee stops, lunch stops and overnight stays. It was enjoyable and we were literally living the dream.

At one of the coffee stops a lady and her small daughter were walking past and I said to the little girl, " And why aren't you in school?" I was expecting her reply to be, I'm too little or I'm not old enough. What I wasn't expecting was: "because it's Saturday ".

As I sat shocked that it was now Saturday, the roar of laughter around me was deafening...

You have to be in it, to win it as the saying goes

I recently won the oldest rider and bike combination award at the Warwick National Rally this year. I was not by far the oldest at all, I won because I bothered to enter and take part. I travelled up with Jim Evans from the Lower Murray branch who would have beaten me easily had he entered. Jim was 83 and riding an 8 year old bike. At the time I was 65 and 10 months and also riding an 8 year old bike. Look at the beautiful trophy I won....



ULYSSES CLUB INC. - FLEURIEU BRANCH JULY WHALER

Mark These Dates On Your Calendar

- **Ghost Town Copi Hollow, Friday 9th to 11th September. 0419 983 193**
- **Planned overnigher??? Saturday 10th to Sunday 11th September**
- **Torren Valley & Victorian Wanders Meet & Greet, Naracoorte Friday 28th to Sunday 30th October. 0437 789 846**
- **Lions Bike Show, at Macclesfield on Sunday 6th November 2022**
- **Onkaparinga Pageant, Sunday 6th November 2022**

2022 Ulysses Club 28th Odyssey- Mannum

Hosted by Lower Murray Branch - Friday 21st – Monday 24th October

Accommodation

Mannum Motel 08 8569 1808

Pretoria Hotel 08 8569 1109

Mannum Big 4 Caravan Park 08 8569 1402 -Mention that you are Ulysses for 10% off.

Bolto Reserve (other side of river) \$10 per night camping and caravans.

Mannum council for info, 08 8564 6020

Itinerary

Friday 21st

Registration and BBQ tea -possibly at rowing club.

Saturday 22nd

Breakfast in Main Street wherever you wish.

Led ride, including lunch stop.

Dinner at Pretoria Hotel (prepaid).

Sunday 23rd

Breakfast in Main Street wherever you wish.

Led ride, including lunch stop.

Dinner wherever you wish

Online registration opening very soon

ULYSSES CLUB INC. - FLEURIEU BRANCH JULY WHALER

Welfare Matters



Cherie Thorpe is our Welfare Officer.

Mobile. **0498 711 137**

Email. reumes.thorpe@gmail.com

Cherie's role is to be the central person in our branch to ensure members in need are assisted in whatever manner is appropriate for that individual. This note is a friendly reminder to inform Cherie if you know a member who needs support.

Age, Service Badges & Branch Shirts

Please remember to contact our Quartermaster, Peter Swallow if you are due for an **AGE** or **YEARS** of **SERVICE BADGE**. You need to supply your membership number, and your current membership status needs to be confirmed by NATCOM.

New Branch Shirts are now available to members. Please contact Peter for details to order these new branch Shirts.

RV Weekenders

Kingston on Murray

August

23rd to 25th

Stony Creek

September

23rd to 25th

Wallaroo

November 4th to 6th

ULYSSES CLUB INC. - FLEURIEU BRANCH JULY WHALER

For those who don't Know Everything Yet

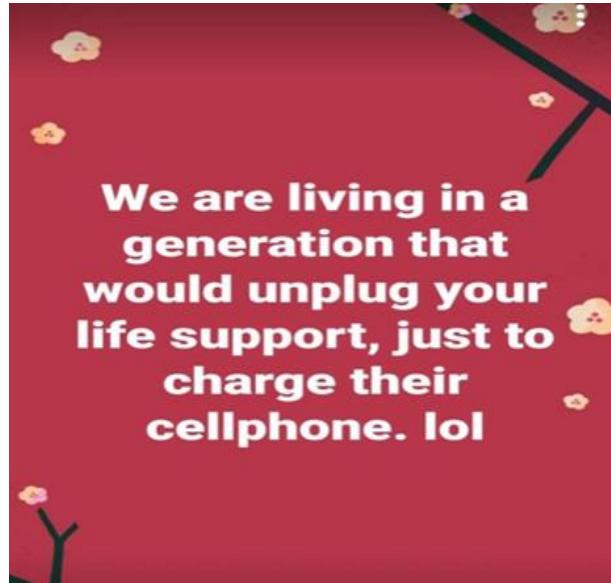
- A cat has 32 muscles in each ear.
- A crocodile cannot stick out its tongue.
- A dragonfly has a life span of 24 hours.
- A goldfish has a memory span of 3seconds.
- A "jiffy" is an actual unit of time for 1/100th of a second.
- A shark is the only fish that can blink with both eyes.
- A snail can sleep for3years.
- Almonds are a member of the peach family.
- Babies are born without kneecaps. They don't appear until the child reaches 2 to 6 years of age.
- Butterflies taste with their feet.
- Cats have over one hundred vocal sounds. Dogs only have about 10.
- "Dreamt" is the only English word that ends in the letters "mt".
- February 1865 is the only month in recorded history not to have a full moon.
- In the last 4,000 years, no new animals have been domesticated.
- If the population of China walked past you in single file, the line would never end because of the rate of reproduction.
- It's impossible to sneeze with your eyes open.
- Leonardo DaVinci invented scissors.
- No word in the English language rhymes with month, orange, silver, or purple.
- Our eyes are always the same size from birth, but our nose and ears never stop growing.
- Peanuts are one of the ingredients of dynamite.
- Rubber bands last longer when refrigerated.
- The cruise liner, QE2, moves only 6 inches for each gallon of dieselthat it burns.
- The microwave was invented after a researcher walkedby a radar tube and a chocolate bar melted in his pocket.
- The winter of 1932 was so cold that Niagara Falls froze completely solid.
- The words 'racecar,' 'kayak' and 'level' are the same whetherthey are read left to right or right to left (palindromes).
- There are more chickens than people in the world.
- Women blink nearly twice as much as men.
- Your stomach produces a new layer of mucus every 2 weeks;otherwise it would digest itself.

Now You Know Everything!

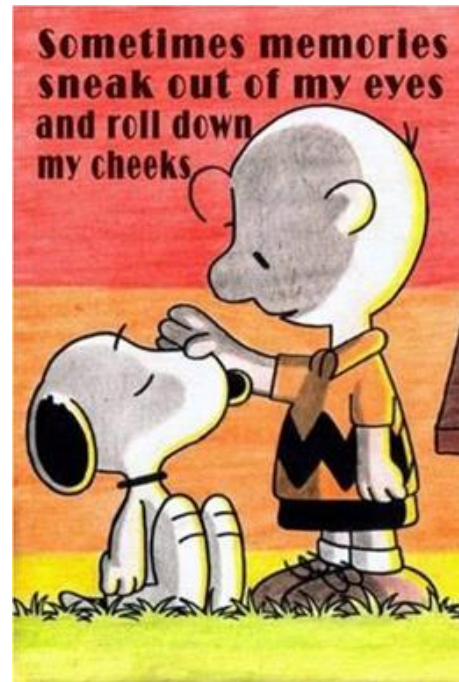
The Funny Side



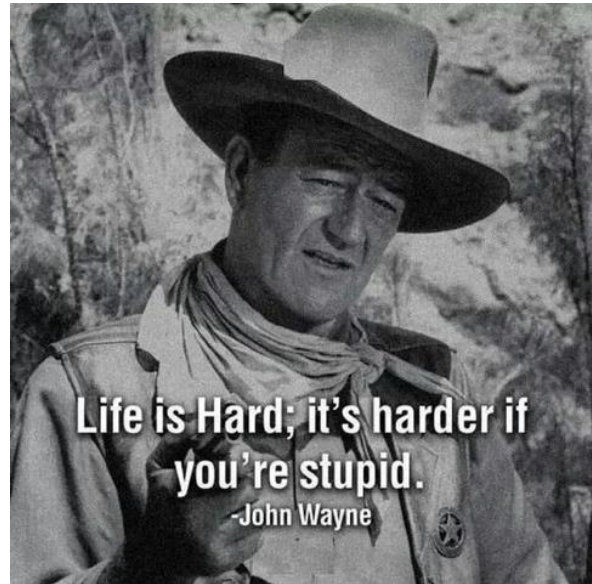
ULYSSES CLUB INC. - FLEURIEU BRANCH JULY WHALER



"You put a round thing on a spinning plate with a needle and then you play with buttons and knobs ... only old people know how to do it!"



**Why don't the
99% of us who
aren't
offended by
everything
quit catering
to the 1% who
are**



The longer I live, the more convinced I am that this planet is used by other planets as a lunatic asylum.

- GEORGE BERNARD SHAW

Women are constantly being inundated with ads for expensive products to erase our wrinkles, to erase our "age". Those lines on my face? Some are from years of laughing with the people I love. Some are from worrying about the children I am lucky enough to call my own. Some are from summer days spent at the beach. Some are from people I've loved and lost. All are evidence of a life lived. So if, when I look in the mirror, I see my "age" reflecting back at me...you know what? I'm good with that.

ULYSSES CLUB INC. - FLEURIEU BRANCH JULY WHALER

Fleurieu Wines

	<p>Any Branch member who would like to purchase Dogridge Winery Canvas red or white wines please contact Phil Wilson marie.selby@optus.com.au</p> <p>The Canvas wine is a variety prepared by the winery without labels to enable the purchaser to place any design of their making on the wine</p> <p>As a member of the Winery I can purchase the wines for any member who would like some. I can purchase both the red and white at the following rates.</p> <p>No label affixed \$10.00 per bottle</p> <p>Fleurieu Branch Label attached \$12.00 per bottle</p>
--	---

Branch Classified ads

ACROSS

CAMPERS



Manufactured in Victor Harbor Email: acrossozcampers@telstra.com

Phone: Ray Hann - 0429 890 830

If branch members would like a classified in the Whaler please see the committee.

Whaler Editor: mike.thorpe@bigpond.com

ULYSSES CLUB INC. - FLEURIEU BRANCH JULY WHALER

- Public Holidays
- Branch Sunday Rides
- Committee Meetings
- Social Meetings
- Gary Parker Friday Rides
- Dominic Carli Wednesday Rides

2023

Fleurieu Branch Ride Calendar

January						
M	Tu	W	Th	F	Sa	Su
						1
2	3	4	5	6	7	8
9	10	11	12	13	14	15
16	17	18	19	20	21	22
23	24	25	26	27	28	29
30	31					

February						
M	Tu	W	Th	F	Sa	Su
		1	2	3	4	5
6	7	8	9	10	11	12
13	14	15	16	17	18	19
20	21	22	23	24	25	26
27	28					

March						
M	Tu	W	Th	F	Sa	Su
		1	2	3	4	5
6	7	8	9	10	11	12
13	14	15	16	17	18	19
20	21	22	23	24	25	26
27	28	29	30	31		

April						
M	Tu	W	Th	F	Sa	Su
					1	2
3	4	5	6	7	8	9
10	11	12	13	14	15	16
17	18	19	20	21	22	23
24	25	26	27	28	29	30

May						
M	Tu	W	Th	F	Sa	Su
1	2	3	4	5	6	7
8	9	10	11	12	13	14
15	16	17	18	19	20	21
22	23	24	25	26	27	28
29	30	31				

June						
M	Tu	W	Th	F	Sa	Su
			1	2	3	4
5	6	7	8	9	10	11
12	13	14	15	16	17	18
19	20	21	22	23	24	25
26	27	28	29	30		

July						
M	Tu	W	Th	F	Sa	Su
					1	2
3	4	5	6	7	8	9
10	11	12	13	14	15	16
17	18	19	20	21	22	23
24	25	26	27	28	29	30
31						

August						
M	Tu	W	Th	F	Sa	Su
	1	2	3	4	5	6
7	8	9	10	11	12	13
14	15	16	17	18	19	20
21	22	23	24	25	26	27
28	29	30	31			

September						
M	Tu	W	Th	F	Sa	Su
				1	2	3
4	5	6	7	8	9	10
11	12	13	14	15	16	17
18	19	20	21	22	23	24
25	26	27	28	29	30	

October						
M	Tu	W	Th	F	Sa	Su
						1
2	3	4	5	6	7	8
9	10	11	12	13	14	15
16	17	18	19	20	21	22
23	24	25	26	27	28	29
30	31					

November						
M	Tu	W	Th	F	Sa	Su
		1	2	3	4	5
6	7	8	9	10	11	12
13	14	15	16	17	18	19
20	21	22	23	24	25	26
27	28	29	30			

December						
M	Tu	W	Th	F	Sa	Su
				1	2	3
4	5	6	7	8	9	10
11	12	13	14	15	16	17
18	19	20	21	22	23	24
25	26	27	28	29	30	31